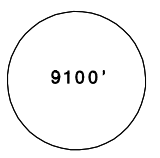
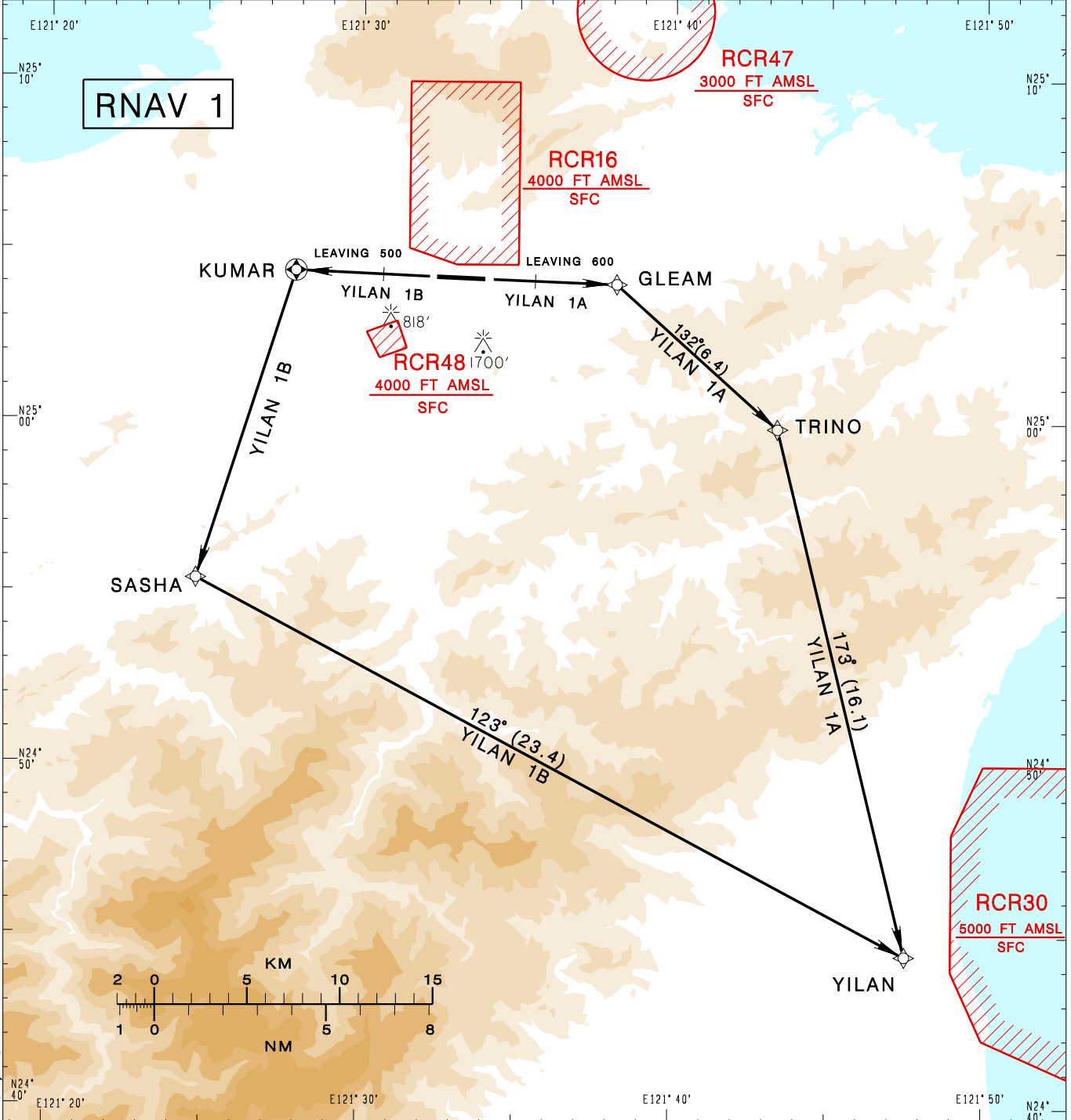


臺北/松山機場
 TAIPEI/SONGSHAN AD

RCSS SID
 YILAN 1A RNAV(RWY10)
 YILAN 1B RNAV(RWY28)

TAIPEI APP 119.7 119.6 125.1	SONGSHAN TWR 118.1	ATIS 127.4 341	 9100' MSA APP 25NM	
Apt Elev: 18'		Trans Level: FL130		Trans Alt: 11,000'
BEARINGS ARE MAGNETIC; DISTANCES ARE NAUTICAL MILES; ELEVATIONS, HEIGHTS IN FEET				



CHANGES: MAG VAR AND TRACK; NOTE 7

YILAN ONE ALFA RNAV DEPARTURE
 Climb on RWY HDG until leaving 600ft,
 then direct to GLEAM, TRINO, YILAN to join B591.

YILAN ONE BRAVO RNAV DEPARTURE
 Climb on RWY HDG until leaving 500ft,
 then direct to KUMAR, SASHA, YILAN to join B591

- NOTE**
- 1.YILAN 1A: Requires a minimum climb gradient of 6.1% (371ft/NM) until TRINO.
 - 2.YILAN 1B: Requires a minimum climb gradient of 5% (304ft/NM) until YILAN or 7000ft.
 - 3.Caution high terrain around airport.
 - 4.A 1700ft-high BLDG at 2.1NM south of THR 28.
 - 5.A 818ft-high BLDG at 2NM SW of THR 10.
 - 6.Critical DME & DME gap not surveyed.
 - 7.ATS surveillance required.